



Munters

HIGH EFFICIENT VENTILATION

***Ruby* 360**

SPRING 2023

PRODUCT CATALOGUE

1-888-218-7829

ruby360.ca



Ruby360 provides integrated electrical solutions across North America. We are a dedicated partner to provide innovative, energy efficient solutions specific to your needs. We can seamlessly integrate your equipment, climate, ventilation, renewable energy and control systems to help you produce smarter.



MISSION

Ruby360 is a family business striving to exceed our customers' expectations by providing high quality, energy efficient, electrical solutions to the agricultural and industrial industries in North America.

VISION

Our vision is to be a premium provider of electrical equipment, controls, climate/ventilation systems and renewable energy for the North American agricultural and industrial sectors.





TABLE OF CONTENTS

Poultry & Egg Equipment	4-6
Swine Equipment	7-8
Ventilation Equipment	9-11
Controls	12-16
Heating Equipment	17
Lighting Equipment	18-20
Monitoring & Bio Security	21
Renewable Energy	22-23



40 Woodstock St. N
Tavistock, Ontario
Canada N0B 2R0

Phone: 1-888-218-7829
Email: sales@ruby360.ca

ruby360.ca



Think ahead with poultry people

Official Quebec dealer for Vencomatic



Bolegg Starter

Cage Free Rearing

With the Bolegg Starter you have a top training facility with optimal ease of use. In this row system with internal platforms, training of the chicks starts at day one in this poultry housing system.



Bolegg Gallery

Aviary System

The Bolegg Gallery is Vencomatic's multi-tier aviary system for layers that combines user friendliness with a clever and economic design. While birds can follow their natural behaviour resulting in optimal laying performance, it allows you to collect eggs in an efficient way, preserving the quality after lay.



Vencomatic Nest

Breeder Systems

Reliability is the key to success for the Vencomatic Nest. The Vencomatic Nest offers a clean, sheltered place for the hen to lay her eggs, resulting in a high nest acceptance. The unique Vencomat in combination with the tipping floor ensures a smooth roll onto the egg belt. These components protect the eggs, preserving their perfect condition after lay.

for complete product information visit ruby360.ca



Meggsius Count

Automatically and accurately counts eggs using vision technology. This ensures a clear insight into the production and allows a continuous egg collection.



Meggsius Detect

A leaking egg detector which detects leaking eggs rolling off an egg belt onto the infeed conveyor of a Prinzen packer.



Meggsius Control

Provides total control over the entire egg flow. In combination with the Meggsius Count a constant automatic egg flow to the packer is realized. You enter the capacity and the system runs automatically.



Pegasus

Egg Transport

Pegasus is the smart egg transport system for safe and efficient egg collection. With the Pegasus we keep the benefit of the incline belts while we decrease the use of space.

- Limited required space, small footprint;
- High capacity;
- Only 2 egg transfers;
- Flexible solution; rows don't need to be positioned straight above each other.



Hercules

Manure Cross Conveyor

The durable Hercules Cross Conveyor, with its compact and simple design, is a reliable and easy way to remove manure out of the house. The frameless conveyor belt can be installed in both new and existing houses which makes the need for a manure pit redundant.



LUBING

Lubing Cuved Egg Conveyor

The flexibility of its design allows this system to be adapted to nearly any imaginable configuration with curves, angles, heights and distances.



OPTICON
AGRI-SYSTEMS

Layer & Broiler Scale

Abattoirs are becoming more demanding when it comes to the weight of the stock that they want to receive, and at what time.



OPTICON
AGRI-SYSTEMS

Opticon In-Cage Scale

Abattoirs are becoming more demanding when it comes to the weight of the stock that they want to receive, and at what time.



OPTICON
AGRI-SYSTEMS

Turkey Scale

Abattoirs are becoming more demanding when it comes to the weight of the stock that they want to receive, and at what time.



OPTICON
AGRI-SYSTEMS

Feed Weighing Unit

Combine the unit with the PMS-20 Feed Weighing and Bird Computer to give you great insight into your feed and water distribution.



OPTICON
AGRI-SYSTEMS

Load Cells

The heart of any weighing system is the load-cell. Whilst they are not exciting to watch, load cells are highly accurate transducers which provides the user with information not generally obtainable by other technology due to commercial factors.



SCAN-AIR
PROFESSIONALS IN FRESH AIR

Black Out Windows

These blackout windows are designed to perfectly control the daylight entry into your barn. The windows can be steplessly blacked out from 0-100%. This system works with integrated counter rotating valves, so that all moving parts are protected against dust and/or moisture.

Pop Doors

The pop-hole door is self-closing and is opened through a motor. By working with multiple doors per department it is possible to close a number of doors in cold periods.



Automatic weighing your pigs



PigScale

The PigScale is an automated, freestanding and mobile weighing system with a voluntary and independent access for pigs. The PigScale enables you to manage your farm based on actual data, so you can monitor growth and activity on a daily basis. The PigScale is the easiest way to gather important animal data without additional labour!

The practical advantages of the PigScale:

- Fully automatic weighing system
- No modifications to the pen are required
- Stress free due to the voluntary entry
- Easy to install in the pen
- Data is visible on your PC and/or available on the internet
- Made of durable stainless steel
- Can show water intake per animal per day (optional)
- Can show environment temperature (optional)
- Can mark pigs automatically according to set weights (up to 3 different colours)
- On average, only 2% deviation on calibrated hand weights*



PigScale Mobile/Web App

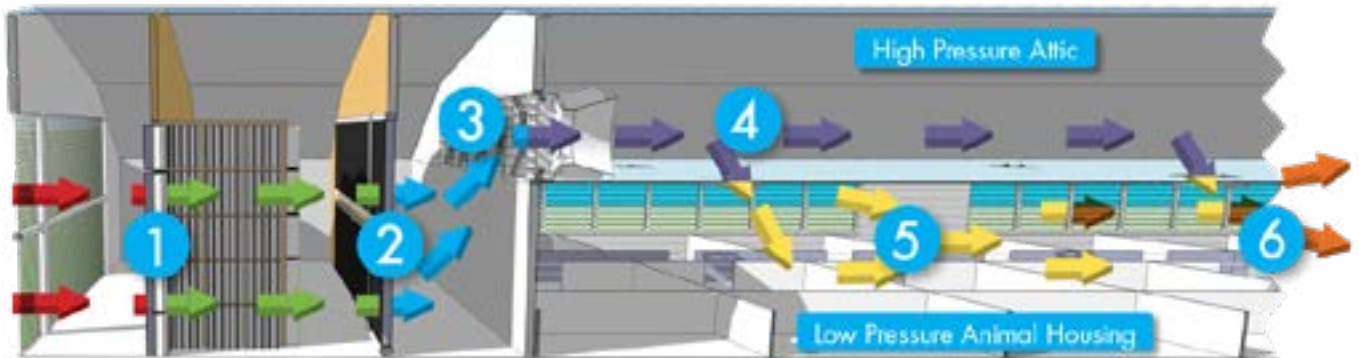
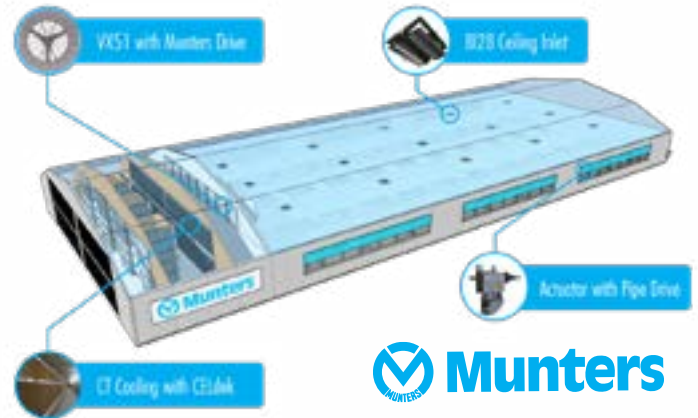
See the performance of your farm and make adjustments from anywhere, anytime. Real-time information will allow you to make better decisions, now and in the future

for complete product information visit ruby360.ca

Let Ruby360 be your partner in the ultimate ventilation system

Positive Pressure Filtered Swine Facilities

Munters has been designing and refining filtered swine facility ventilation for many years. Our design engineers have worked with some of the top hog producers in the world leading us to our Positive Pressure Ventilation Design. This is not a new concept. In fact, Munters/Aerotech was designing positive pressure systems nearly 50 years ago. However, with the development of filtration for animal health, positive pressure gives you the best results for healthy livestock. Our latest design incorporates filters, cooling, Munters Drive VX Fans, BI28 Inlets and actuated outlet walls. All carefully engineered to create a Positive Pressure Ventilation System that will protect your animals.



The System

1. Outdoor unfiltered ambient temperature air passes through filter wall, removing airborne pathogens
2. Filtered air passes through cooling wall, cooling the air to the perfect temperature.
3. Munters Drive VX fans precisely pressurize the attic with filtered & cooled air.
4. Ventilation flows through BI28 Inlets responding to pressure difference from the attic to Animal Housing, maintaining a consistent pressure difference between the attic and animal housing.
5. Munters backdraft shutters prevent pressure drops and back drafts in windy conditions.
6. Actuator with pipe drive system adjusts curtain openings to maintain constant room pressure and provide outlet for metabolic gases and moisture.

Talk to us about our solution for filtered air to help assist you in the prevention of PRRS, PED virus, influenza and Mycoplasma hyopneumoniae



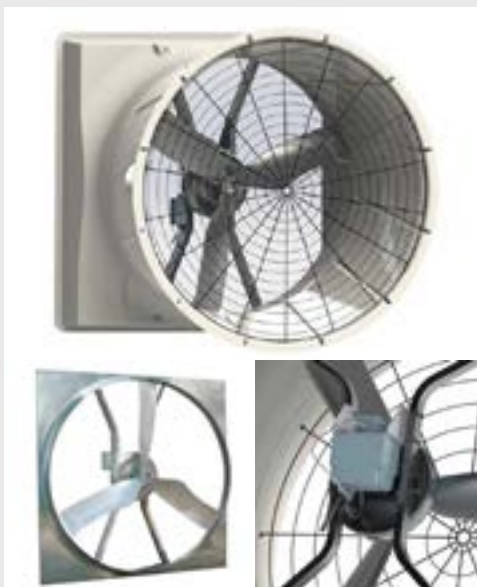
Munters

Your Perfect Climate

Extraction & Circulation Fans with Munters Drive

Munters has engineered the latest advancement in motor technology by developing this unique motor drive system. It is designed for high performance and low energy consumption. The revolutionary motor offers up to a 40% reduction in electrical usage and is nearly maintenance free, helping to reduce your carbon foot print, save money and usher in a "greener" approach to agricultural and horticultural ventilation.

- Reduce fan energy costs up to 40%
- Nearly Maintenance Free - No Bearing maintenance, No belt replacement, No tensioner.
- Reduce your carbon footprint
- Patent Pending
- Qualifies for energy rebates



VX Series

Exhaust Fans

The VX Aerotech fan series is Munters premium exhaust fan line. Our engineers understand the harsh environments in which VX fans must perform and have designed the series to optimize both performance and quality.



AT Series

Circulations Fans

Munters high volume recirculation fans maintain steady airflow in your building which provides fresh air, reduces condensation and equalizes temperatures.



CX Series

Circulations Fans

The advanced design of the CX produces a higher centerline velocity, providing you with more control over the air movement in your barn versus the competition.

for complete product information visit ruby360.ca



Vario

Circulation Fans

Engineered to mix large volumes of air and provide even temperatures throughout your facility.



DB Series

Light Trap

Light trap Modules provide the highest reduction with the lowest pressure drop for your blackout, brownout, or other dark ventilation needs.



Max Flow

Light Trap

Made of durable corrosion free plastics. They are easily assembled and removed, providing superior performance and cost benefits.



Modular Ceiling Inlet

Fully plasticized double-walled air inlet with sufficient insulating value to prevent condensation during winter. Offers better control and precision of the air intake openings compared to a traditional continuous air intake system in cold weather.



BI Attic Inlets

The BI Series bi-flow ceiling inlet with an all new design created using the latest in computer aerodynamic modeling.



BA4000 Curtain Machine

Use heavy-duty, long travel actuators to operate curtains or air inlet baffles. The 4,000 lb. capacity reduces the number of machines needed for longer buildings.



Safe-Let1000 Inlet

The Safe Let 1000 inlet is Ideal for larger airflow requirements, such as Cage Free Layer applications . The Safe Let 1000 is constructed of a PVC frame and a well insulated durable polyurethane rigid foam door.



ZEW Professional 2900

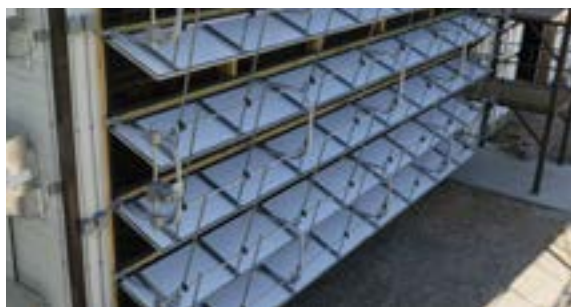
Through its unique geometry, the coming together of cold fresh air and moist warm building air is displaced to areas in which no negative effects on functionality will occur.



Tunnel Doors

Inside Tunnel Doors

With a 1 inch expanded polystyrene foam baffle protected by black corrugated polypropylene sheets this system has a thermal insulation advantage over the industry standard of foam and plastic sheets.



Horizon Tunnel Doors

Outside Tunnel Door

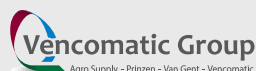
Foam doors with molded fiberglass exterior are the perfect material for this application to give the system many advantages like best r-value, best rigidity to weight ratio, and eliminates water leaks.



ECO Unit

With the ECO Unit you can fully control the minimum ventilation in your house. Via aeration tubes brings the ECO Unit fresh preheated air at bird level. This directly results in an enhanced wellbeing of the bird. The preheated air is distributed directly under the bird and onto the manure belt.

- Improved litter, and FCR
- 35% lower ammonia concentrations
- And all this while you can **save up to 75% gas!**



Schedule a 1-on-1 calculation with our climate expert
and find out how much money you can save on your gas bill!

visit ruby360.ca/eco-unit
to get your free savings calculation today!



ECO Unit 200



ECO Unit 800



ECO Zero

for complete product information visit **ruby360.ca**

Ruby 360



Ruby360 Integrated Controls

Ruby360 Integrated Controls bring your equipment, climate/ventilation and renewable energy together seamlessly in a single control panel for ease of management and control of your facility.

Ruby360 specializes in fully customized integrated control panels. All systems are built and designed in house using quality components and programmed to suit your needs. Each panel is created with a unique label design using our in-house plotter system.

- Our efficient panel shop is designed to get your jobs done quickly and professionally.
- Ruby360 is fully experienced in handling any size of project
- We produce quality control systems following Kaizen practices
- Each panel is built with a complete manual controls for emergency situations and servicing capabilities

PROVIDING CONTROLS FOR

- | | |
|--------------------------------|----------------------------|
| • Automated feeding | • Ventilation |
| • Feed mixing | • Heating & cooling |
| • Manure conveying | • Variable speed inverters |
| • Egg collection | • Soft starts |
| • Egg flow control & counting | • Lighting |
| • Water flush valve automation | • Alarm Systems |

We understand the complexity of modern farming and have the ability and experience to build custom control systems for your integrated applications.



for complete product information visit ruby360.ca



EDGE® Controller

EDGE® is a single platform that is versatile and intuitive allowing it to handle all control applications. The unique design makes EDGE® the number one choice controller on the market that can be configured to match your operation's specific requirements. It is also flexible enough to be adapted to new construction or existing system upgrades.



FUNCTIONS LIKE A SMART PHONE

Large screen, vibrant graphics and familiar "swipe" and "scroll" smart phone functions.

EASIER NAVIGATION

Fewer "clicks" to get to a desired function.

IMPROVED CONNECTIVITY SAVES TIME

Integrated Wi-Fi.

CONNECT WHEN YOU'RE ON THE GO

Connect to the controller 24/7 from anywhere using a dedicated app.

UNINTERRUPTED OPERATION

Protected by redundant power supplies and communication paths for uninterrupted operation.

ONE CONTROLLER IS ALL YOU NEED

Control multiple buildings or rooms from a single EDGE® controller.

BY-PASS MODE WITH THE PUSH OF A BUTTON

Temporarily by-pass programmed functions with the push of a button. single EDGE® controller.

OPTICON AGRI-SYSTEMS



Opticon Touch

The Opticon Touch provides you, at a glance, all vital farm data at any moment in time. The controller has a highly-intuitive touch screen that enables you to quickly access all important parameters.



Farm Data

Web-Based & Mobile Software

Improve the performance of your poultry farm by decisions based on real-time farm data. Anywhere, anytime you will be able to see the performance of your poultry farm.



Egg Flow & Counting Computer

The Opticon Egg Flow/Counting Computer is a system designed to accurately count egg production and keeping your farm packer running at full capacity.



Opticon Egg Counter

The Opticon Egg Flow/Counting Computer is a system designed to accurately count egg production and keeping your farm packer running at full capacity.



MCC-10

Climate Computer

Opticon climate controls take care of a healthy and efficient growth of your poultry & swine.



Bird Scale Computer

DWS-20

The Opticon DWS-20 is a management system designed for the modern producer who requires optimum production information.



Feed Weighing/Bird Scale Computer

Feed, water and light are the most important factors affecting growth and performance in your poultry barn. For this, Opticon has developed the PMS-20 to monitor and manage the above.



PEB-20/PEB-30

The end stations PEB-20 and PEB-30 are frequently used to control ventilation and light in combination with Opticon controllers.



SMU-10

End Station for Air Inlets

The SMU-10 is an electronic extension unit (end station) to control a flap motor when it is connected to the 0-10 V DC output from an Opticon controller.



Manual Flush Control

Semi-Automatic flush control system includes on/off switches for each row, controlling 2 tiers at a time (also available in custom configurations).

Green lights are included to indicate when the valves are open. Full electrical drawings provided, system fully-tested and ESA approved.

Semi-automatic and fully automatic systems available. Systems can include up to 40 valves.

To make your flush control system automatic add in the **Rain Dial®-R**



ALSO AVAILABLE

Pressure regulator with actuator for automatic flushing

The optional screw-in actuator allows automatic flushing of the drinker line: The LUBING flush control "LCW Touch Control" switches successively, the actuators, which open the integrated flush valve of the pressure regulator Optima E-Flush. The required voltage is provided by LCW controller uniformly in 24 V DC. The cable length of the actuators of 7.5 m ensures a flexible handling. The manual flushing remains possible also with actuator.



Ruby 360



MultiHeat HW Unit

To obtain the best results in poultry buildings an optimum climatic environment is essential for the health and productivity of the birds.



Snooksuperior

Indirect Fired Gas Heater

Saving energy and optimising the climate inside a shed are top priorities for every poultry farmer. The SnookSuperior Indirect Fired Gas Heater by Multiheat outperforms our previous S'nook*.



SwitchSuperior

Compact Heat Exchanger

Saving energy and optimising the climate inside a poultry house are top priorities for every poultry farmer. Temperature and ventilation play a big part in the ideal circumstances for poultry to perform.



REV-AL Light Finned Tubes

These systems are the ideal choice in particular for the preheating or for use in conjunction with diffusing fresh air systems.



ESA-1000

Heat Exchanger

With its powerful heat recovery technology, the ESA-1000 allows you to save up to 50% on heating costs.



ESA-3000

Heat Exchanger

The ESA-3000 helps reduce cold drafts on the animals for improved animal activity and health. It also provides minimum ventilation with better air circulation, which reduces your levels of CO₂, humidity and ammonia. By reducing your heating needs, it also decreases your greenhouse gas emissions by up to 50%.

Features:

- Auto Cleaning System
- 2x more efficient than a conventional fan
- Delivers up to 10,000 CFM in Bypass Mode
- Save up to 50% on your heating cost

once®

Animal-Centric Lighting



AGRISHIFT® MLM-R

For Layers

The AgriShift® MLM-Red 8 Watt LED improves productivity and animal welfare by making natural daylight simulation easy with Dim-to-Red® technology.



AGRISHIFT® MLM-B

For Pullets

The AgriShift® MLM-B 10 Watt LED optimizes performance by providing a species-specific spectrum shown to naturally calm chickens, minimizing aggressive behaviors.



AGRISHIFT® MLM-S

For Swine

The AgriShift® MLM-S is suitable for use in sow barns, gestation buildings, nurseries, gilt development units, and finishing facilities.



AGRISHIFT® MLL

For Layers & Breeders

The 3rd generation AgriShift® MLL lighting fixture features a brighter, longer lasting and more rugged design that is less sensitive to power fluctuations.



AGRISHIFT® MLB

For Broilers & Turkeys

The AgriShift® MLB 14 Watt LED for broiler and turkey operations is designed to promote early weight gain while enhancing animal welfare.



AGRISHIFT® MLS

For Swine

The AgriShift® MLS 14 Watt LED for swine operations features a brighter, more durable design. Offering even light distribution for the swine herd and the humans caring for them.

for complete product information visit ruby360.ca



AGRISHIFT® JLP

For Pullets & Aviary Systems

The AgriShift® JLP provides an optimized color spectrum with full dimming capability, essential for healthy bird development during early growth stages.



AGRISHIFT® JLL

For Layers & Breeders

The AgriShift® JLL 8 Watt LED light fixture is optimized for layer house lighting, especially in aviary and enriched colony systems.



AGRISHIFT® TLP

For Pullets

AgriShift® TLP is designed to operate in-system to meet the lighting needs of poultry housed in today's deeper and more spacious systems.



AGRISHIFT® TLL

For Layers

The AgriShift® TLL in-system LED tube light provides egg producers and breeders with an in-system lighting solution to meet the needs of today's modern poultry houses.



AGRISHIFT® TLL

Long/Short for Layers

The AgriShift® TLL Long/Short in-system tube light provides an in-system lighting solution that meets the needs of today's modern poultry houses.



AGRISHIFT® FEEDER LIGHT

The AgriShift® FL is a Feeder Control Pan fixture designed to attract birds to the main or control feeder pans. The LED generates light at poultry specific wavelengths and draws in the birds to encourage feeding.

NEW PRODUCT



NatureDynamics

NatureDynamics DOME provides a dynamic lighting system to create the best lighting conditions for animals.

NatureDynamics lighting is fully adaptable. Multiple features such as scene-setting and recipe planning can be deployed with the touch of an app. With their robust design, NatureDynamics DOME luminaires are made to withstand the harsh conditions of barn environments.



AGRICULTURAL LIGHTING

ONCE® animal-centric lighting systems go beyond traditional LEDs by offering a SOLUTION designed to simultaneously improve production and animal welfare.



THE SCIENCE

We research the science of light exclusively for the agricultural market and incorporate the findings into commercial patented technologies.



PROVEN RESULTS

At ONCE®, we base our technology on decades of proven research so both the animals and your bottom line benefit, leaving you to feel confident with your informed decision.



ANIMAL WELFARE

By incorporating photo-biology into innovative technologies, ONCE® can minimize sudden changes in light and provide natural daylight simulation, reducing animal stress and improving welfare.

AGRISHIFT® Master & Slave Dimmer

The AgriShift® Master Controller is designed specifically for dimming and controlling lights in poultry, swine or fish operations. This integrated Controller offers several advanced features giving it added flexibility, such as a front panel display, which addresses the needs of today's modern farming techniques.

- Improves animal welfare
- Advanced technology for LED lighting
- Precise, consistent, incremental dimming
- Asymmetric sunrise/sunset program capability
- Programmable, timed or temporary dimming override
- Programmable transition time for sunrise/sunset

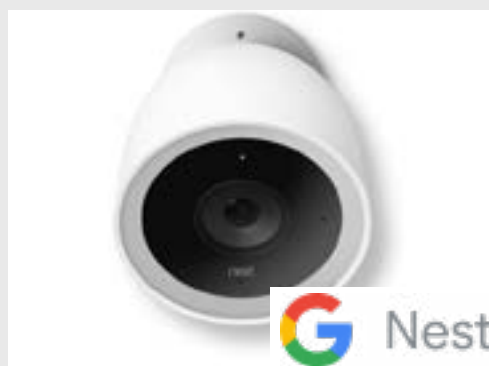




Agri-Alert 128 Touch

Alarm System

Agri-Alert 128T is the latest addition to AP's line of dependable alarm systems. Equipped with all of the classic and many new features, it offers producers ultimate peace of mind.



Google Nest Camera & Nest IQ Cameras

- **Weather resistance** - dust tight and protected against water projected from a nozzle.
- Operating temperatures **as low as -40°C**
- **130° diagonal** field of view
- **Night Vision** featuring 8 high-power infrared LEDs
- Two-year limited warranty



Google Nest Aware Video History

Alarm System

24/7 continuous recording, intelligent alerts, clips & time-lapses, and activity zones.

5-day, 10-day or 30-day video history available

once®



BioShift® Pass-Through UV-C Chamber

The BioShift® Pass-Through Germicidal UV Chamber is an economically friendly tool designed to strengthen bio-security protocols by killing viruses and other pathogens in a recommended time of five minutes, before they can enter your bio-secure farm facility.

- Eco-friendly
- Heavy-duty stainless steel chamber
- Designed for safety and ease of operation
- Pass-through chamber deactivates the DNA
- Easy-to-use, one button operation



500kW Ground Mount



ENERGY SOLUTIONS

Renewable energy is an important part of our future. Whether your goal is to save on energy costs or reduce your carbon footprint, let Ruby360 work as your partner to provide you a custom, efficient energy solution to suit your specific application.



500kW Roof Mount



60kW Roof Mount

Our experienced team is capable of a variety of different types of solar projects.

- Net metering
- Off the Grid
- Load displacement
- Hybrid systems
- Battery solutions
- Pitched roof
- Flat roof
- Ground Mount
- Custom builds

for complete product information visit ruby360.ca



Ruby360 Power Shack

The Ruby Power Shack creates and stores energy, within an insulated shipping container while also providing a secure office or storage facility. With the help of Schneider Electric technology we offer a fully integrated energy storage container.



Containerized solutions



Energy storage & battery systems



Inverters & custom instrumentation controls



ENERGY AUDITS

On-site and off-site assessments to get a full understanding of your energy system. This helps to determine the most cost-effective solution for your operation.



TURNKEY SOLUTIONS

Our team will fully engineer and design your system right through to commissioning the project. Delivering you the complete package along with peace of mind.



REBATES & INCENTIVES

Interested in taking advantage of the latest energy incentives? Ruby360 will work with you to find the program that is the best fit for you.



Choose Ruby360 as your project partner

Services included

- Initial assessment of project goal
- Equipment solution choices based on your goals and regulatory requirements
- Poultry and swine weighing equipment
- Feed weighing equipment
- Biosecurity recommendations
- Ventilation solutions
- Manure management and control solutions
- Lighting solutions
- Design and supply complete heating systems
- Custom design and build integrated control panels to efficiently run entire facility
- Alarm-entry systems
- Renewable energy solutions featuring solar and battery storage



1-888-218-7829 sales@ruby360.ca

40 Woodstock St. N, Tavistock, Ontario
Canada N0B 2R0

ruby360.ca